

GRYPHON™ I GBT/GM4500 2D

DATALOGIC
EMPOWER YOUR VISION

IMAGING TECHNOLOGY

The Gryphon™ 4500 series represents the premium range of hand held scanners for general purpose applications. Designed with people in mind, the Gryphon 4500 series stands out with its elegant and cutting edge design, the unchallenged ergonomics, and features the most advanced Megapixel sensor with white-illumination 2D technology for outstanding performance.

WIRELESS COMMUNICATIONS

Featuring Bluetooth® wireless technology (GBT model) or narrow band radio communications with Datalogic's STAR Cordless System™ (GM model), the Gryphon 4500 wireless readers provide maximum flexibility to solve any end user application with the best technical solution.

WIRELESS CHARGING

One of the most important technical innovations that the Gryphon 4500 wireless scanners achieve is the battery recharge through an inductive charging system, which enhances the reliability of the entire solution, lowering the total cost of ownership because it eliminates the need for contacts' cleaning and maintenance procedures. The maximum reliability offered by the Gryphon wireless charging technology means 24/7 activities with no stops for maintenance or repair and top-level operating productivity and performance.

SIMPLE TO USE AND DEPLOY

The Gryphon I 4500 omnidirectional imager provides snappy reading performance on all common 1D and 2D codes. High Density (HD) models are available for reading smaller, condensed codes as well as a dedicated version with red illumination optics to support Digital Watermarking.

Datalogic's Motionix™ motion-sensing technology enables the scanner to intuitively switch into hand held mode when the device is picked up. When placed back into the stand, it seamlessly returns to stand mode. The adjustable position cradle provides the flexibility to use the scanner in presentation or stand mode while it's charging.



FEATURES

- 1 MP optics for superior scanning and DOF
- Datalogic distinctive technology with highly visible white-illumination and 4-Dot aimer with center cross for targeted scanning
- Datalogic's patented 'Green Spot' technology, exclusive 3GL™ (3 Green Lights) and Vibration for superior good-read feedback
- Motionix™ motion-sensing technology for seamless reading mode transitions
- Omnidirectional reading
- Image capture and document scanning capabilities
- Reads 1D, 2D and postal codes plus stacked and composite codes; Digital Watermarking and DPM reading on specific models
- Choice of Bluetooth wireless technology version 4.0 with BLE or Datalogic STAR Cordless System (radio frequencies available in 433 MHz or 910 MHz)
- Wireless battery charging system
- Adjustable position cradle with Scan-While- Charging capability
- Batch Mode capability
- Point-to-point / Point-to-multipoint transmission
- Long lasting user-replaceable Lithium-Ion battery

Industry - application

- Retail - Point of Sale
- Light Manufacturing
- Healthcare: in laboratories, pharmacies and in-room patient care
- Access Control, Transportation and Entertainment
- Commercial Services: Postal, Banks, Public Administration, Utilities



GRYPHON™ I GBT/GM4500 2D

TECHNICAL SPECIFICATIONS

CORDLESS COMMUNICATIONS

Datalogic STAR Cordless System™	Effective Radiated Power: 433.92 MHz: < 6.3 mW; 910 MHz: < 50 mW Multi-Point Configuration: Max. Readers per Radio Receiver: 16; Point-to-Point Configuration; Radio Frequency: 433.92 MHz; 910 MHz; Two Way Communications Radio Range (Open Air): 50.0 m / 164.0 ft
Bluetooth Wireless Technology	Piconet: Max. Readers per Radio Receiver: 7 Profiles: SPP (Serial Port Profile) Protocol: Bluetooth 4.0 with BLE Certified Class 1, Class 2 and Class 3; Radio Frequency: 2.4 GHz Radio Range (Open Air): 100.0 m / 328.0 ft; Range distances are measured using the base station. Range with connection to other Bluetooth peripherals may show different results. Security: Data Encryption; Scanner Authentication

DECODING CAPABILITY

1D / linear codes	Autodiscriminates all standard 1D codes including GS1 DataBar™ linear codes.
2D codes	Aztec Code; China Han Xin Code; Data Matrix; MaxiCode; Micro QR Code; QR Code
Postal codes	Australian Post; British Post; China Post; IMB; Japanese Post; KIX Post; Planet Code; Postnet; Royal Mail Code (RM4SCC)
Stacked codes	EAN/JAN Composites; GS1 DataBar Composites; GS1 DataBar Expanded Stacked; GS1 DataBar Stacked; GS1 DataBar Stacked Omnidirectional; MacroPDF; MicroPDF417; PDF417; UPC A/E Composites
Digital Watermarking	Digimarc Barcodes

ELECTRICAL

Battery	Battery Type: Lithium-Ion: 3250 mAh Charge Time: External Power: 4 Hours @ 12 VDC; Reads per Charge: 80,000
Cradle Indicator LEDs	Battery Charging (flashing orange); Charge Completed (steady green)
Current	Charging (Typical): < 6 W; Scanner only: 330 mA @ 3.7 V (Operative) Cradle only: 80 mA @ 5 V (Operative)
Input voltage	4.5 - 14 VDC +/- 5%

ENVIRONMENTAL

Ambient light	0 - 100,000 lux
Drop resistance	Withstands repeated drops from 1.8 m / 6.0 ft onto a concrete surface.
ESD Protection (Air Discharge)	16 kV
Humidity (Non-Condensing)	0 - 95%
Particulate and Water Sealing	IP52
Temperature	Operating: 0 to 50 °C / 32 to 122 °F Storage/Transport: -40 to 70 °C / -40 to 158 °F

INTERFACES

Interfaces	RS-232 / USB / Keyboard Wedge Multi-Interface
-------------------	---

PHYSICAL CHARACTERISTICS

Colors Available	Black; White
Dimensions	16.6 x 6.8 x 10.9 cm / 6.5 x 2.7 x 4.3 in
Weight	235 g / 8.29 oz



READING PERFORMANCE

Image Capture	Graphic Formats: BMP, JPEG, TIFF; Greyscale: 256, 16, 2
Image Sensor	1 Megapixel: 1280 x 800 pixels
Light source	Aiming: Red Laser 650 nm Illumination: Warm White; Hyper Red LED for Digimarc
Motion tolerance	35 IPS
Print contrast ratio (minimum)	15%
Reading angle	Pitch: +/- 65°; Roll (Tilt): 360°; Skew (Yaw): +/- 65°
Reading indicators	Beeper (adjustable tone); Vibration feedback option available for quiet places; Datalogic Three Green Lights (3GL) Good Read Feedback; Datalogic 'Green Spot' on the Code, Dual Good Read LEDs
Resolution (maximum)	High Density (HD): 1D Linear: 0.077 mm / 3 mils; PDF417: 0.077 mm / 3 mils; Data Matrix: 0.102 mm / 4 mils Standard Range (SR): 1D Linear: 0.102 mm / 4 mils; PDF417: 0.127 mm / 5 mils; Data Matrix: 0.195 mm / 7.5 mils

READING RANGES

Typical depth of field	Minimum distance determined by symbol length and scan angle. Printing resolution, contrast, and ambient light dependent.
-------------------------------	--

GD4500 Standard Range (SR)

Code 39: 5 mils: 7.0 to 38.0 cm / 2.7 to 14.9 in
Code 39: 10 mils: 2.2 to 58.0 cm / 0.8 to 22.8 in
Data Matrix: 10 mils: 5.5 to 27.0 cm / 2.2 to 10.6 in
Data Matrix: 15 mils: 2.8 to 41.0 cm / 1.1 to 16.1 in
EAN-13: 13 mils: 1.0 to 71.0 cm / 0.4 to 27.9 in
PDF417: 10 mils: 2.5 to 41.0 cm / 1.0 to 16.1 in
QR Code: 10 mils: 5.5 to 24.0 cm / 2.2 to 9.5 in

GD4500 High Density (HD)

Code 39: 3 mils: 5.0 to 15.0 cm / 2.0 to 5.9 in
Code 39: 5 mils: 0.5 to 25.0 cm / 0.2 to 9.8 in
Data Matrix: 5 mils: 5.5 to 9.0 cm / 2.2 to 3.5 in
Data Matrix: 10 mils: 2.0 to 27.0 cm / 0.8 to 10.6 in
EAN-13: 7.5 mils: 2.0 to 23.5 cm / 0.8 to 9.3 in
EAN-13: 13 mils: 1.0 to 40.0 cm / 0.4 to 15.7 in
PDF417: 4 mils: 3.0 to 12.0 cm / 1.2 to 4.7 in
PDF417: 10 mils: 0.5 to 31.0 cm / 0.2 to 12.2 in
QR Code: 10 mils: 2.0 to 25.0 cm / 0.8 to 9.8 in

SAFETY & REGULATORY

Agency Approvals	The product meets necessary safety and regulatory approvals for its intended use. The Quick Reference Guide for this product can be referred to for a complete list of certifications.
-------------------------	--

Environmental Compliance	Complies to China RoHS; Complies to EU RoHS
---------------------------------	---

Laser Classification	Caution Laser Radiation - Do not stare into beam; IEC 60825 Class 2
-----------------------------	---

UTILITIES

Datalogic Aladdin™	Datalogic Aladdin configuration program is available for download at no charge.
---------------------------	---

OPOS JavaPOS	JavaPOS and OPOS Utilities are available for download at no charge.
---------------------	---

Remote Host Download	Lowers service costs and improves operations
-----------------------------	--

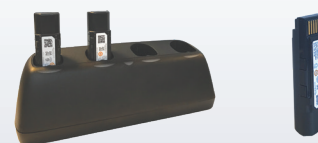
WARRANTY

Warranty	3-Year Factory Warranty
-----------------	-------------------------

ACCESSORIES

Base Stations/Chargers

- WLC4090-BK-BT / WLC4090-WH-BT: Bluetooth Base station; Wireless Charger; Multi-Interface (Black / White)
- WLC4090-BK-433 / WLC4090-WH-433: 433 MHz Base station; Wireless Charger; Multi-Interface (Black / White)
- WLC4090-BK-910 / WLC4090-WH-910: 910 MHz Base station; Wireless Charger; Multi-Interface (Black / White)



Base Stations/Chargers

- MC-GM45 Battery Charger, 4-Slot
- RBP-GM45 Removable Battery Pack